

North West Leicestershire

# WALKING AND CYCLING STRATEGY 2022-2032



## VISION

For North West Leicestershire to become a district where walking and cycling are safe, accessible and obvious choices for short journeys.

This will be achieved by creating a safe, attractive, integrated cycling and walking network, and by using a range of behavioural change initiatives.

# OBJECTIVES

- ▶ Create a highway infrastructure to support and encourage cycling and walking for all.
- ▶ Ensure that current and future networks are of a high standard
- ▶ Strike an appropriate balance between the needs of all road users
- ▶ Make all new schemes and infrastructure optimally inclusive and accessible to all
- ▶ Integrate existing and future networks with public transport hubs
- ▶ Work with key destination venues / agencies to secure their support for cycling and walking.
- ▶ Work with key partners to create a greener infrastructure
- ▶ Ringfence funding to support cycling and walking infrastructure
- ▶ Develop and support behavioural change processes and opportunities.



# **BENEFITS OF IMPROVED INFRASTRUCTURE**

- ▶ Support the district's ambition to be carbon neutral by 2050 by tackling road congestion and air quality and increasing resilience to climate change
- ▶ Support the local economy, businesses and tourism
- ▶ Improve the health and wellbeing of residents
- ▶ Address inequalities and improve connectivity.

## **THE STRATEGY**

Local Cycling and Walking Infrastructure Plans (LCWIPs) allow authorities and other organisations to source funding through central Government to improve local cycling and walking infrastructure.

To do this successfully, we need evidence to tell us what we need. This strategy provides the evidence needed to support a LCWIP for the six key towns and villages in the district: Ashby de la Zouch, Coalville, Castle Donington, Ibstock, Kegworth and Measham.

Using this evidence, we will draw up a LCWIP, which will set out the associated costs, the types of routes and infrastructure needed, and where they should be, maintenance requirements and so on.

## **NEXT STEPS**

This strategy will now be used to develop a Local Cycling and Walking Infrastructure Plan for the district.

This will take a number of months to complete - we expect the LCWIP to be available from autumn 2022.





## CREATING THE STRATEGY

We have consulted with the public through surveys, local walking and cycling clubs and groups and local action groups, as well as with neighbouring authorities to understand their current schemes and future proposals. This ensures that, where possible, these programmes are integrated with the cycling and walking aspirations identified in this strategy.

Partners and stakeholders, including Leicestershire County Council, town and parish councils and the National Forest Company, have given their feedback, and we have considered how local and national policy will impact on our plan, with a literature review of all relevant local documentation, including North West Leicestershire's Local Plan and the current cycling strategies for Ashby, Kegworth and Coalville.

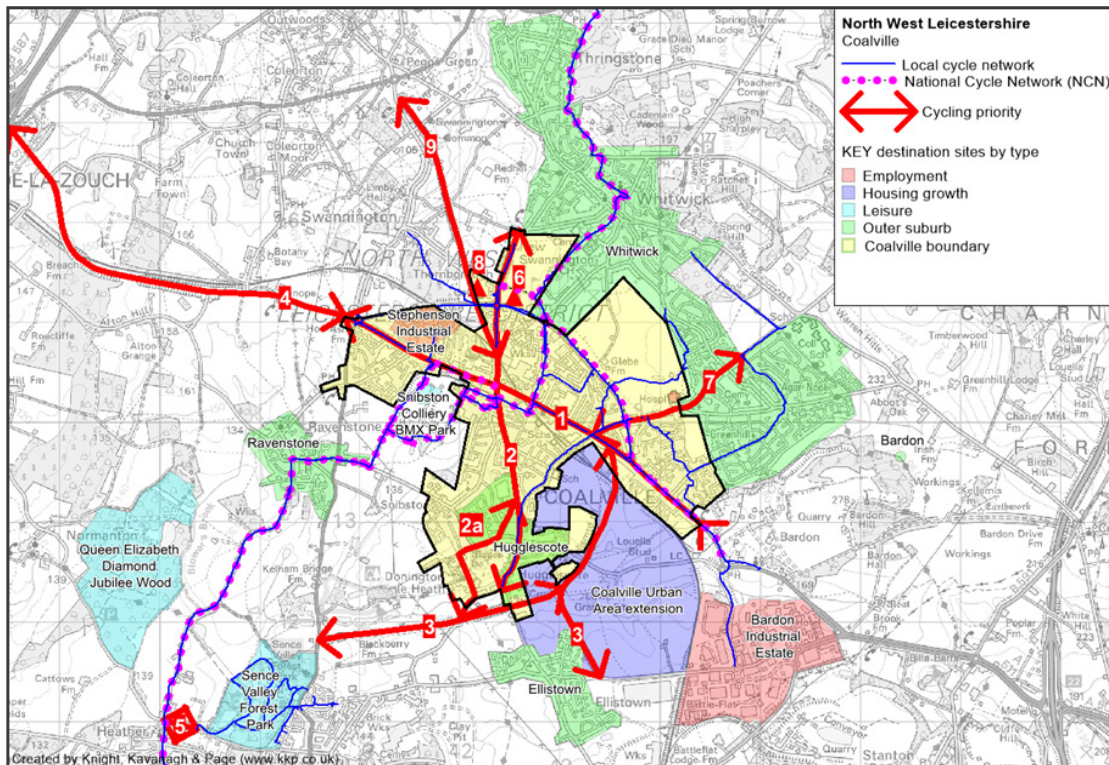
We have used the Propensity to Cycle Tool (PCT) - a model which identifies potential commuter cycling routes.

A series of maps have been produced identifying where investment should be focused to support cycling and walking in the six key towns and villages, and include the following:

- Cycling maps incorporating proposed routes with key destinations
- Walking heat maps to indicate where priorities for investment could be focused.

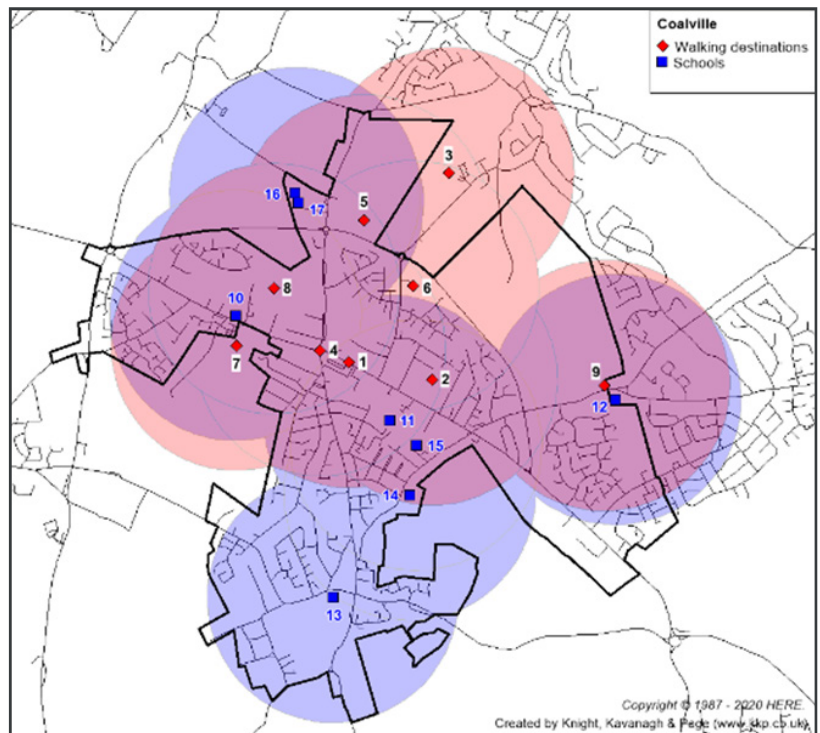
These maps have been developed to inform the LCWIP. The finalised route proposals will be completed as part of the LCWIP process.

# COALVILLE PROPOSED CYCLE ROUTES

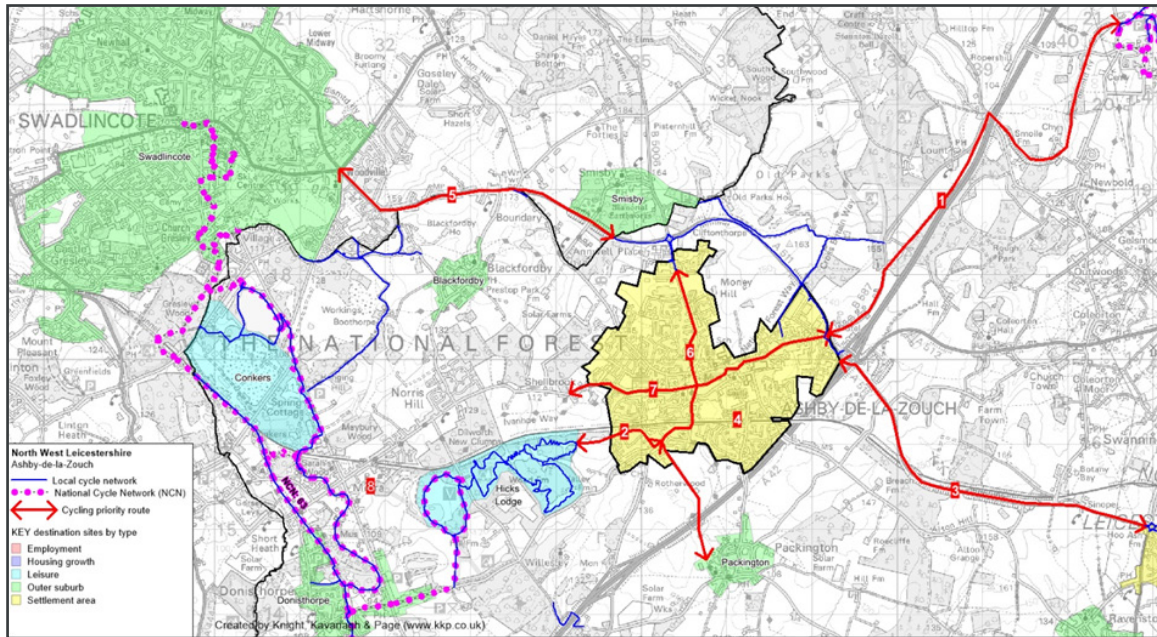


# COALVILLE WALKING HEAT MAP

ID	Walking destination
1	Bus and coach station (family centre)
2	Coalville Park
3	Hermitage fishing lake and recreation ground
4	High Street
5	Whitwick and Coalville Leisure Centre
6	Morrisons / Whitwick Retail Park
7	Snibston Colliery Park
8	Urban Forest Park
9	Broom Leys Surgery
10	All Saints Church of England Primary School
11	Belvoirdale Community Primary School
12	Broom Leys Primary School
13	Hugglescote Community Primary School
14	Newbridge High School
15	St. Clare's Catholic Primary School
16	Stephenson College
17	Stephenson Studio School

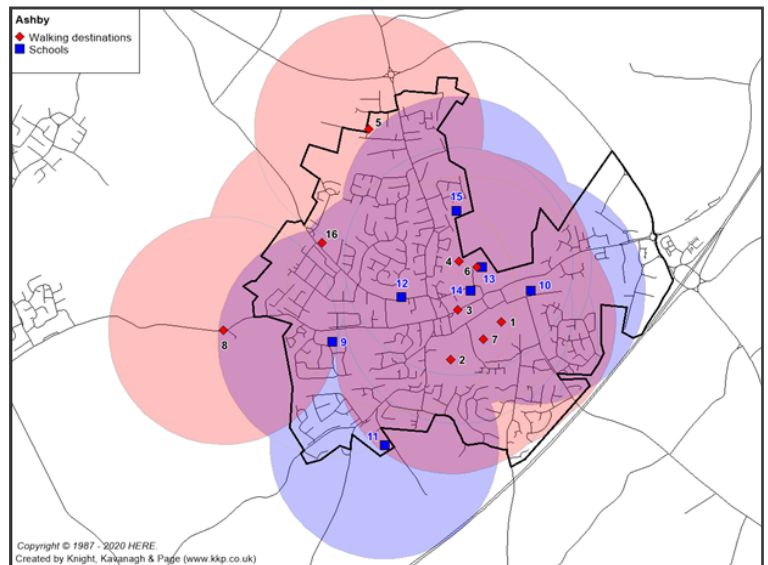


# ASHBY PROPOSED CYCLE ROUTES

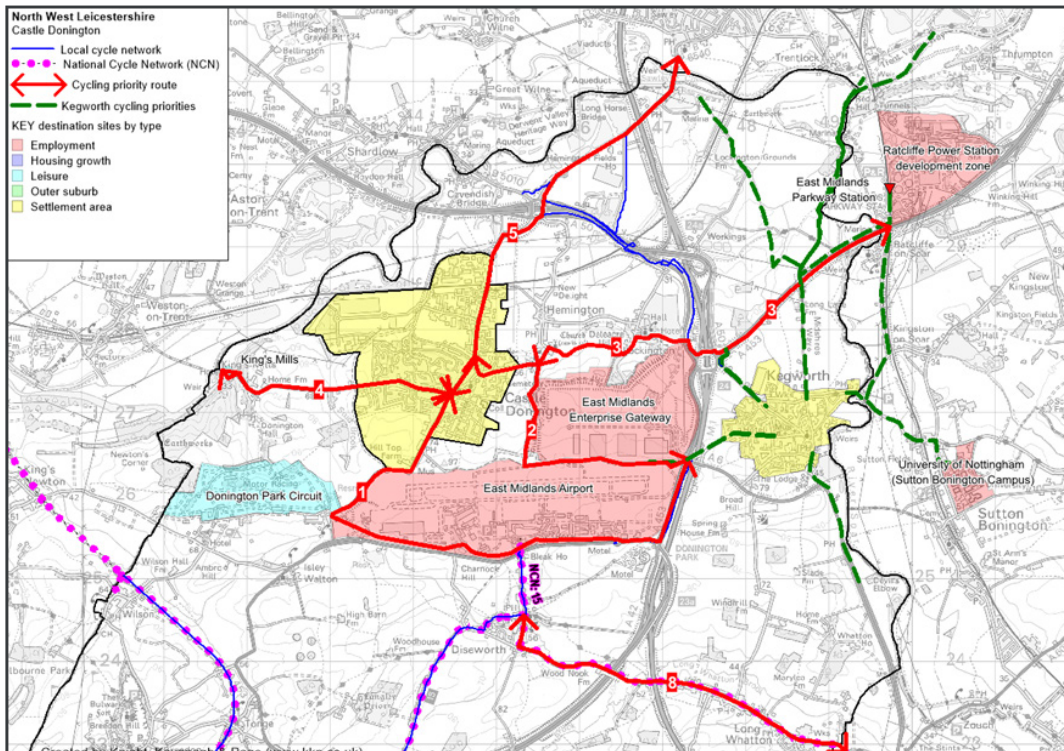


# ASHBY WALKING HEAT MAP

ID	Walking destination
1	Ashby de la Zouch Castle
2	Bath Grounds
3	High Street
4	Ashby Lido and Leisure Centre and Hood Park
5	Ivanhoe Business Park
6	Ivanhoe College
7	Memorial Grounds and Castle
8	Prestop Park
9	Ashby Hill Top Primary School
10	Ashby School
11	Ashby Willesley Primary School
12	Ashby de la Zouch C of E Primary School
13	Ivanhoe College
14	Lewis Charlton Learning Centre
15	Woodcote Primary School
16	Castle Medical Group

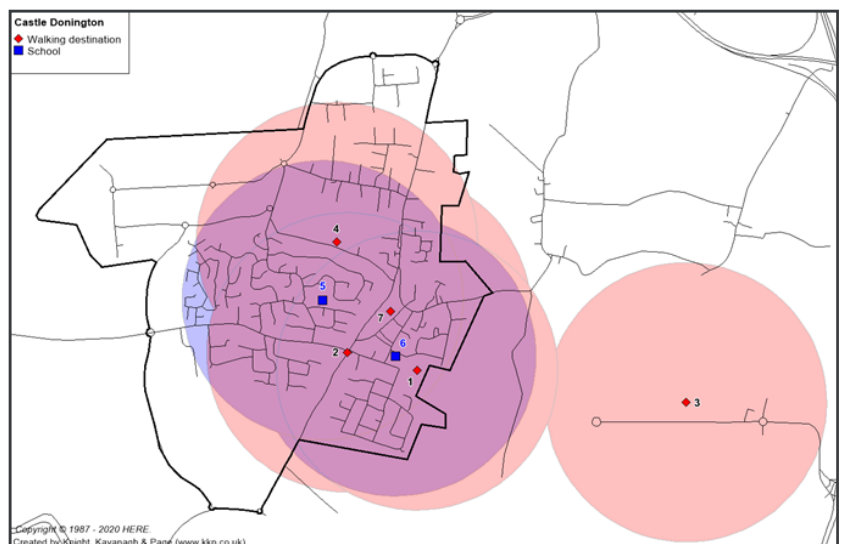


# CASTLE DONINGTON PROPOSED CYCLE



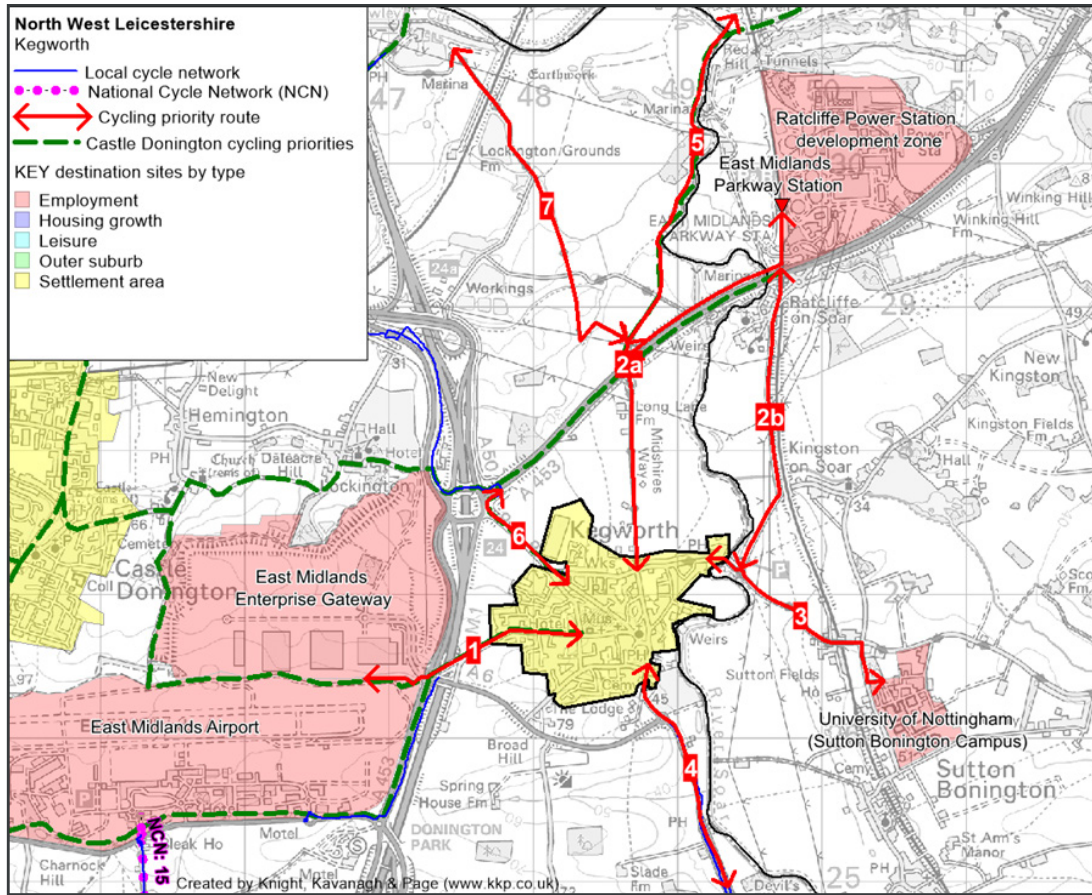
# CASTLE DONINGTON WALKING HEAT

ID	Walking destination
1	Castle Donington College / Leisure Centre
2	Castle Donington High Street
3	East Midlands Gateway
4	Spital Park Pavilion
5	Orchard Community Primary School
6	St. Edward's Church of England Primary School
7	Castle Donington Surgery



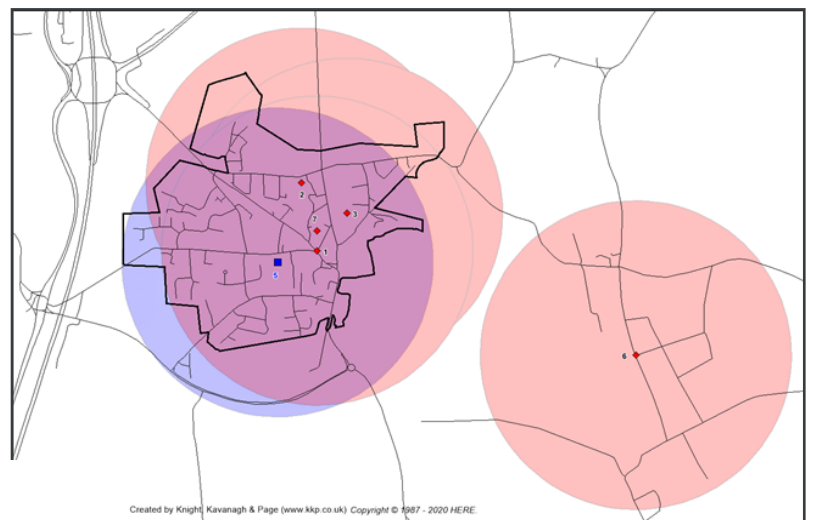


# KEGWORTH PROPOSED CYCLE ROUTES

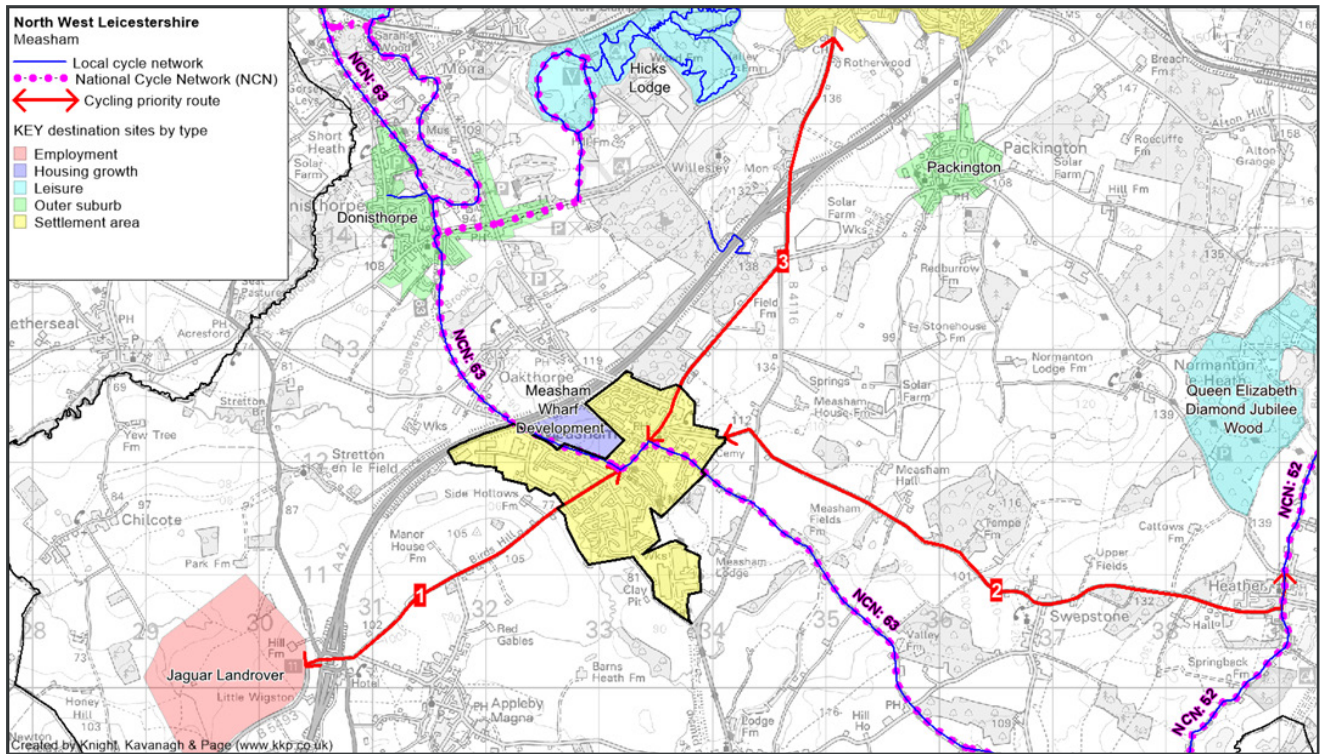


# KEGWORTH WALKING HEAT MAP

ID	Walking destination
1	Kegworth High Street / Market Street
2	Kegworth play area
3	Kegworth village hall
5	Kegworth Primary School
6	Sutton Bonington Campus
7	Orchard Surgery

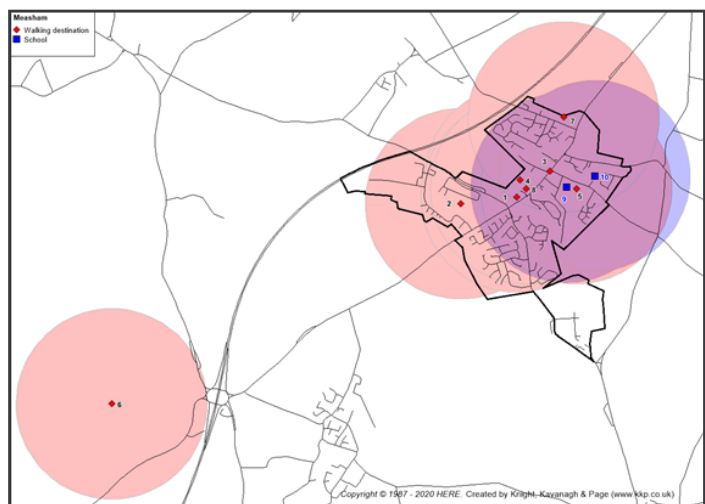


# MEASHAM PROPOSED CYCLE ROUTES

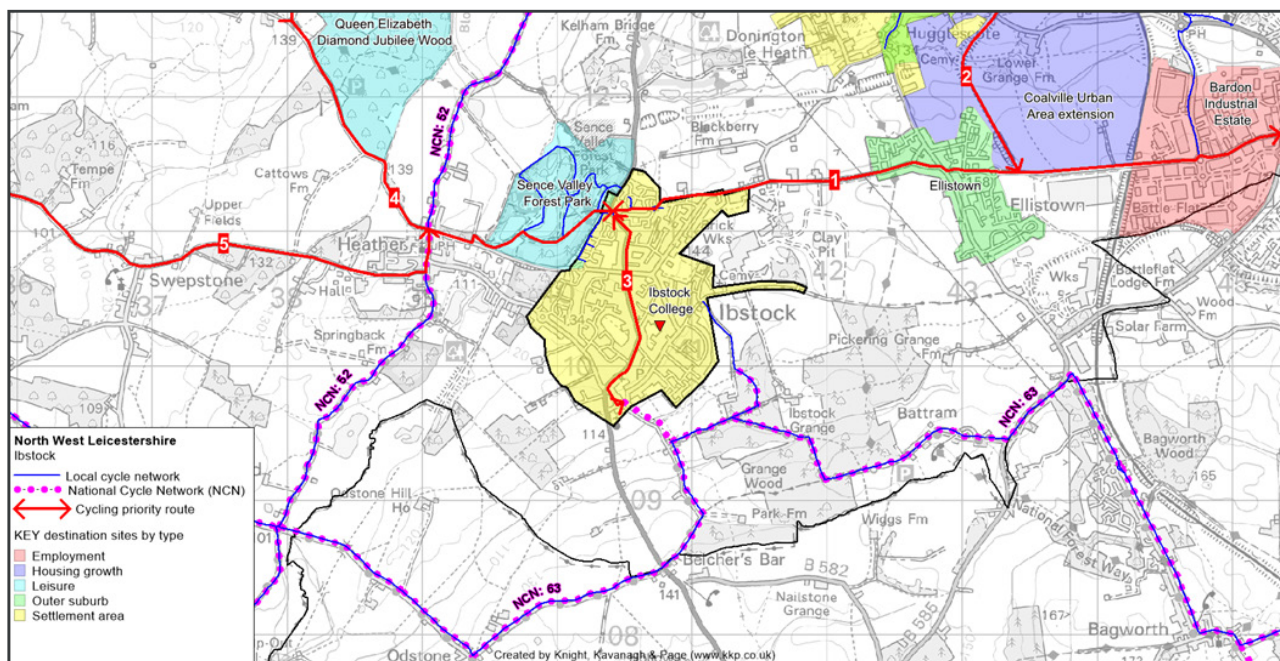


# MEASHAM WALKING HEAT MAP

ID	Walking destination
1	Ashby Wouds Heritage Trail
2	Industrial estate to the south
3	Measham High Street
4	Measham Leisure Centre
5	Measham Park
6	Proposed Jaguar Landrover site
7	Wooded area to the north - with cafe
8	Measham Church of England Primary School
9	St. Charles Catholic Primary Voluntary Academy
10	Measham Medical Unit



# IBSTOCK PROPOSED CYCLE ROUTES



# IBSTOCK WALKING HEAT MAP

## ID Walking destination

- 1 High Street
- 2 Leicester Road Play Park
- 3 Ibstock Leisure Complex / Ibstock Community College
- 4 Ibstock Junior School
- 5 St. Denys Church of England Infant School, Ibstock
- 6 Ibstock and Barlestone Surgeries

